



MOUNTAINS TO SOUND HOME INSPECTION LLC

253.344.4714

office@mshomeinspection.com

<https://www.mshomeinspection.com/>



HOME INSPECTION REPORT

3507 SW Alaska St #44
Seattle WA 98126

Ron Carstensen

JANUARY 29, 2020



Inspector

Allen Munn

Home Inspector Lic. 2267

(206) 484-1824

allen@mshomeinspection.com



Agent

Diane Lucas

Keller Williams Rty Bellevue

(206) 445-8143

dianelucas@kw.com

Table of Contents

Table of Contents	2
SUMMARY	4
1: POSITIVE ATTRIBUTES OF THE HOME	5
2: INSPECTION DETAILS	6
3: MAIN ELECTRICAL PANEL	7
4: WATER HEATER & PLUMBING	8
5: KITCHEN	11
6: KITCHEN APPLIANCES	13
7: BATHROOMS	14
8: LAUNDRY	18
9: INTERIORS, WINDOWS & DOORS	20
10: GENERAL COMMENTS	23
11: ELECTRIC HEATING SYSTEM	26
12: REASONABLE EXPECTATIONS OF A HOME INSPECTION	27
13: REPORT CONCLUSION	29
STANDARDS OF PRACTICE	30

Thank you for choosing Mountains to Sound Home Inspection.

Please carefully read through the entire inspection report. We are happy to assist with additional question you may have.

This report is based on a visual inspection of the building at the time and date of the inspection. Given the limited time allowed for an inspection, please do not expect that every concern or issue will be noted. Conditions of an occupied home can change after an inspection or sellers items may obscure our view of other defects. We strongly recommend that you and/or your representative carry out a final walk through immediately before closing to check the condition of the property.

Listed with most items of concern is a recommendation for a trade specialist. For your safety and liability, these concerns should be evaluated by the appropriate contractors prior to closing. Further recommendations may be given by a specialist. Lastly, we recommend obtaining at a minimum a full 1 year warranty as additional items for repair are likely to come about within that time. Here is a video walk-through on [How to Read Your Inspection Report](#).

SUMMARY





LOW PRIORITY



MEDIUM PRIORITY



HIGH PRIORITY

-  4.1.1 Water Heater & Plumbing - Water Heating System: Seismic Straps - Missing/Insufficient
-  4.1.2 Water Heater & Plumbing - Water Heating System: Expansion Tank Not Installed
-  4.1.3 Water Heater & Plumbing - Water Heating System: No drain pan or pipe
-  4.1.4 Water Heater & Plumbing - Water Heating System: Discharge pipe plumbed uphill
-  4.1.5 Water Heater & Plumbing - Water Heating System: Nearing Expected Life
-  5.3.1 Kitchen - Valves and Connectors: Drip leak on the hot water shut-off
-  7.1.1 Bathrooms - Sink and Faucet: Sinks stopper needs work
-  7.4.1 Bathrooms - Tub-Shower: Missing or deteriorated caulk/grout
-  7.4.2 Bathrooms - Tub-Shower: Showerhead Leaks
-  7.5.1 Bathrooms - Toilet: Free flowing/runs continuously
-  7.8.1 Bathrooms - Exhaust Fan: Exhaust fan did not work on demand
-  7.10.1 Bathrooms - Flooring: Minor cracks in floor tiles or grout lines
-  7.12.1 Bathrooms - Walls and Ceiling: Skylight enclosure paint damaged/deteriorated
-  8.6.1 Laundry - Exhaust Fan: No exhaust fan or openable window
-  8.7.1 Laundry - Doors: The door rubs
-  9.1.1 Interiors, Windows & Doors - General Notes: Door Stops-General
-  9.2.1 Interiors, Windows & Doors - Doors: Door rubs
-  9.4.1 Interiors, Windows & Doors - Walls and Ceiling: Typical settlement cracking/nail pops
-  9.11.1 Interiors, Windows & Doors - Lights, Wall Switches: Light not working
-  11.1.1 Electric Heating System - Electric Heating Notes: Noisy Heating unit

1: POSITIVE ATTRIBUTES OF THE HOME

Information

Plumbing

The plumbing system was
Copper plumbing

Siding

The Siding was Cementitious
(Hardie) Siding

Addition Features

Wood Burning Fireplace

Description

1988 built codominium in Seattle with 2 bedrooms and 2 baths. Close to Trader Joe's, Whole Foods, Fauntleroy Place, and Junction Plaza.

2: INSPECTION DETAILS

Information

Start Time

1pm

In Attendance

Listing Agent, Inspector

Occupancy

Vacant

Style

Single Level

Weather Conditions

Rain, Cloudy

Year Built

1988

Temperature

40-50 degrees

Type of Building

Condominium / Townhouse

The images here are the directional locations of the home used throughout the report. Ensure you get yourself orientated to what direction the house is situated in order to better follow along.

Condominium Disclaimer

Because this is a report on a condominium or town home inspection, I may not fully inspect or report on the condition of the roof, the foundation, grading and drainage, irrigation systems or components beyond the unit (such as swimming pools or water features), which are typically the responsibility of the home owners' association or property management company. I recommend contacting them with any questions regarding these and other items and your financial responsibility with them.

Notice to Absent Clients

We prefer to have our clients present, during, or immediately following the inspection so that we can elaborate on what may well be complicated or technical issues that could be somewhat difficult to understand. Since you were not present, we encourage you to read the whole report and not just the summary report, and to consult with us directly. Also, please verify with us anything that you believe we may have said.


3: MAIN ELECTRICAL PANEL

Information

Service Entrance: Main Lines Underground	Service Entrance: Main Lines Acceptable The electrical service entrances are acceptable	Panel Size, Location & Photo: Panel Amps, Location and Picture Condo, Right Bedroom
Panel Cover Condition: Acceptable The electrical panel cover is in acceptable condition.	Wiring Notes: Electrical Service Conductors Aluminum, 120/240 volt	Circuit Breakers: Acceptable There are no visible deficiencies with the circuit breakers.
Panel Size, Location & Photo: Earth Ground Not visible The main panel grounding was observed and found to be in good repair and of adequate function at the time of the inspection.		
Main Panel Notes: Acceptable The panel and its components have no visible deficiencies. Any exceptions will be noted below.		

4: WATER HEATER & PLUMBING

Information

Water Heating System: Energy Source/Type Electric	Water Heating System: Year 2006	Water Heating System: Location Hallway, Closet
		
Water Heating System: Capacity 40	Water Heating System: Electrical Connections-Acceptable The electrical connection to the water heater is functional.	Main Water Shut-Off, Distribution & Supply: Main Water Shut off Location Closet
Main Water Shut-Off, Distribution & Supply: Water Meter Location Hoa no apparent meter.	Main Water Shut-Off, Distribution & Supply: Water Supply Material To House Unknown	Drain, Waste, & Vent Systems: Waste pipe Material Unknown

Water Heating System: Manufacturer and picture
Whirlpool

I recommend flushing & servicing your water heater tank annually for optimal performance. Water temperature should be set to at least 120 degrees F to kill microbes and no higher than 130 degrees F to prevent scalding.

[Here is a nice maintenance guide from Lowe's to help.](#)

Water Heating System: Water Shut-Off Valve & Connectors
The shut-off valve and water connectors appear functional, but was not tested.



Main Water Shut-Off, Distribution & Supply: Plumbing acceptable
The plumbing was generally in acceptable condition. Any exceptions will be noted low.

Main Water Shut-Off, Distribution & Supply: Water Distribution Material

Copper

A representative amount of the plumbing distribution system was observed and found to be in good repair.

Drain, Waste, & Vent Systems: Acceptable

Based on industry recommended water tests, the drainpipes are functional and acceptable at this time and functional drainage was noted. However, only a video-scan of the main drainpipe could confirm its actual condition which is beyond the scope of a general home inspection. Any exceptions will be noted below.

Drain, Waste, & Vent Systems: Side Sewer Notes

For a full evaluation of the waste line, we recommend that a sewer scope be completed.

Observations

4.1.1 Water Heating System

SEISMIC STRAPS - MISSING/INSUFFICIENT

The hot water heater was missing seismic straps or was insufficiently anchored. Recommend two straps to properly secure water heater in the case of an earthquake.

Recommendation

Contact a qualified professional.



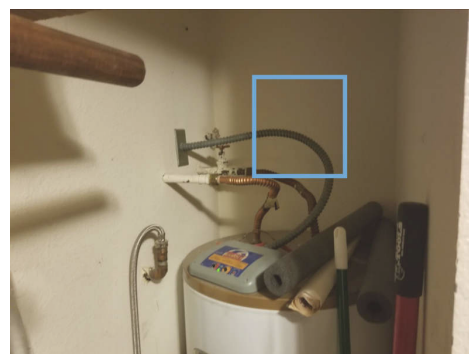
4.1.2 Water Heating System

EXPANSION TANK NOT INSTALLED

A thermal expansion tank was not installed. We recommend installation

Recommendation

Contact a qualified professional.



4.1.3 Water Heating System

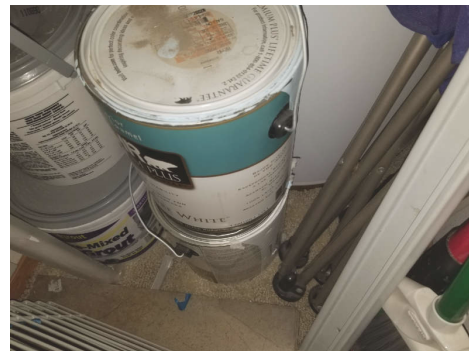
NO DRAIN PAN OR PIPE



The water heater is not equipped with a drain pan and a discharge pipe, which is designed to prevent water damage from a leak. Nevertheless, the water heater should be periodically monitored for any signs of a leak. We recommend having one installed when the water heater is replaced.

Recommendation

Contact a qualified professional.



4.1.4 Water Heating System

DISCHARGE PIPE PLUMBED UPHILL

The discharge pipe from the pressure relief valve has been incorrectly plumbed uphill. This is not permissible and the discharge pipe should be correctly plumbed.

Recommendation

Contact a qualified plumbing contractor.



4.1.5 Water Heating System

NEARING EXPECTED LIFE

The water heater is nearing the end of its average expected life of 15 years. Replacement may be needed in the near future.

Recommendation

Contact a qualified plumbing contractor.



5: KITCHEN

Information

Kitchen-PICTURE



Sink and Faucet: Acceptable

The kitchen sink and faucet are functional.

Trap and Drain: Acceptable

The kitchen trap and drain are functional. No leaking was noted.

Countertop: Acceptable

The visible areas of the kitchen countertops were functional.

Exhaust Fan Notes: Acceptable

Vents to Exterior
The kitchen exhaust fan was functional.

Walls and Ceiling: Acceptable

The walls and ceiling are textured drywall and in acceptable condition.

Cabinets: Acceptable

The cabinets are functional, and do not have any significant damage.

Outlets, Electrical Observations: Acceptable

The outlets functioned as intended.

Lights, Wall Switches: Acceptable

The wall switches are functional.

Lights, Wall Switches: Acceptable

The ceiling lights are functional.

Sink and Faucet: Water temp

The Water temp at the Kitchen Faucet is Currently noted in the photo below. The U.S. Consumer Product Safety Commission (CPSC) urges all users to keep their water heater temps at 120 degrees Fahrenheit to prevent scalding and bacteria prevention reasons.



Valves and Connectors: Acceptable

The kitchen valves and connectors below the sink appear functional. Valves were not turned, however no leaking was noted at the time of inspection. Valves are not in daily use and will inevitably become stiff or frozen.

Flooring: Acceptable

The floor is in satisfactory condition and has no significant visible defects.

Observations

5.3.1 Valves and Connectors



Medium Priority

DRIP LEAK ON THE HOT WATER SHUT-OFF

There is a leak on the hot water shut-off valve below the kitchen sink, which should be evaluated and repaired as necessary by a qualified plumber.

Note: Dishwasher feed valve

Recommendation

Contact a qualified plumbing contractor.



6: KITCHEN APPLIANCES

Information

Range: Acceptable

The range is functional.

Range: Range type

Electric range

Refrigerator: Acceptable

The fridge was functional and achieved acceptable fridge and freezer temperatures. This is a limited courtesy fridge inspection you should ask the sellers about its full operation. You should make sure to set your fridge at appropriate temps.

Dishwasher: Acceptable

The dishwasher is functional, completes an entire cycle, drains properly and no leaking was noted.

Garbage Disposal: Acceptable

Garbage disposal was functional and ran quietly at the time of the inspection.

Built in Microwave: Acceptable

The built in microwave was functional during the inspection, but I did not test it for leakage, which would require a specialized instrument. However, their power diminishes over time, and the specific measurement of the microwaves, as well as their containment within the unit, requires specialized instruments, which is beyond the scope of our service.

7: BATHROOMS

Information

Sink and Faucet: Acceptable

The sinks were functional.

Trap and Drain: Acceptable

The trap and drain are functional. No leaking was noted.

Toilet: Acceptable

The toilets were functional, flushes properly and no leaking noted.

Countertop: Acceptable

The countertops were functional.

Cabinets: Acceptable

The cabinets are functional, and do not have any significant damage.

Exhaust Fan: Acceptable

The bathroom exhaust fan is functional and works on demand.

Doors: Acceptable

The door(s) are functional.

Walls and Ceiling: Acceptable

The walls and ceiling are textured drywall and in acceptable condition.

Closet: Acceptable

The closet was inspected and appeared to be in acceptable condition

Closet: Acceptable

The door(s) are functional.

Lights, Wall Switches: Acceptable

The ceiling/wall lights are functional.

Lights, Wall Switches: Acceptable

The wall switches are functional.

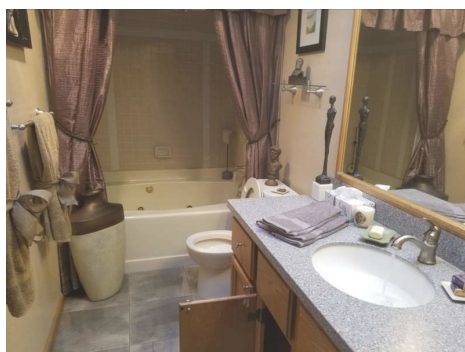
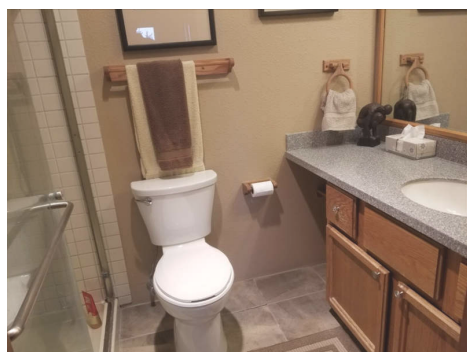
Outlets, Electrical Observations: Serviceable HVAC: Acceptable

All tested Outlets were serviceable. Any exceptions will be noted.

Heating was acceptable.

Bathroom Photos

These photos are to show the condition of the bathrooms at the time of the inspection.

**Bathrooms In Acceptable Condition**

The bathrooms are overall in acceptable and serviceable condition. Any exceptions will be noted in their perspective areas.

Valves and Connectors: Acceptable

The valves and connectors below the sink appear functional. Valves were not turned, however no leaking was noted at the time of inspection. Valves are not in daily use and will inevitably become stiff or frozen.

Tub-Shower: Acceptable

The tub/shower is functional. Hot and cold water supply temperature was verified and no leaking noted.

Flooring: Acceptable

The floor is in satisfactory condition and has no significant visible defects.

Hydro-Spa: Acceptable

The hydro-spa is functional but should be flushed with a cleanser if not used frequently.

Observations

7.1.1 Sink and Faucet

SINKS STOPPER NEEDS WORK

BOTH BATHROOMS

The sinkstopper does not work properly and repair is recommended.

Recommendation

Contact a qualified handyman.

Medium Priority



7.4.1 Tub-Shower

MISSING OR DETERIORATED CAULK/GROUT

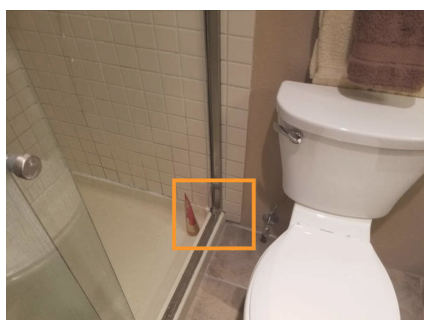
MASTER BATH

The tub surround is has missing or deteriorated caulk/grout. Recommend caulking or sealing to prevent moisture intrusion.

Recommendation

Contact a qualified professional.

Medium Priority



7.4.2 Tub-Shower

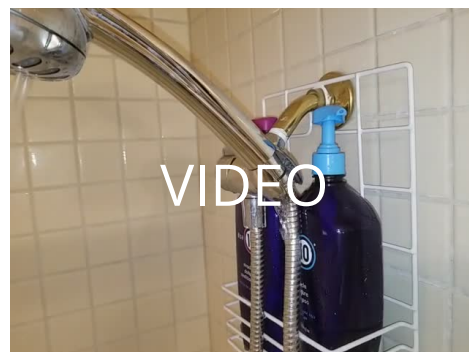
SHOWERHEAD LEAKS

MASTER BATH

The showerhead leaks while in use. Recommend repair by a qualified professional.

Recommendation

Contact a qualified professional.



7.5.1 Toilet

FREE FLOWING/RUNS CONTINUOUSLY

MASTER BATH

The flush valve in the toilet tank does not seal closed, which causes the toilet to free-flow or run continuously, and should be further evaluated and serviced or replaced as necessary.

Recommendation

Contact a qualified handyman.



7.8.1 Exhaust Fan

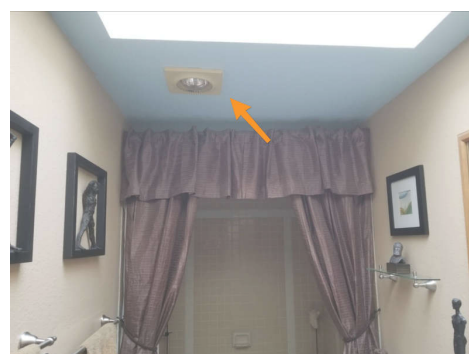
EXHAUST FAN DID NOT WORK ON DEMAND

HALLWAY BATH

The bathroom exhaust fan does not respond properly to the control switch, and should be serviced.

Recommendation

Contact a qualified handyman.



7.10.1 Flooring

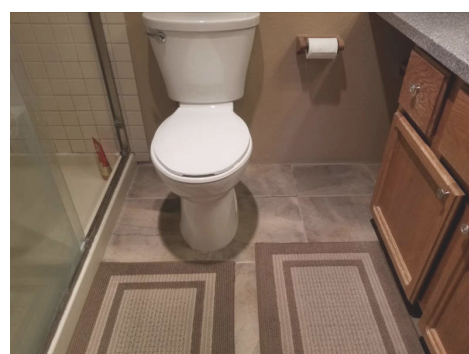
MINOR CRACKS IN FLOOR TILES OR GROUT LINES

MASTER BATH

There are minor and typical cracks in the floor tiles or grout lines, which you should view for yourself. They are likely to have been caused by normal settlement, but you may wish to seek the opinion of a specialist; especially if you are concerned or desire more information.

Recommendation

Contact a qualified flooring contractor



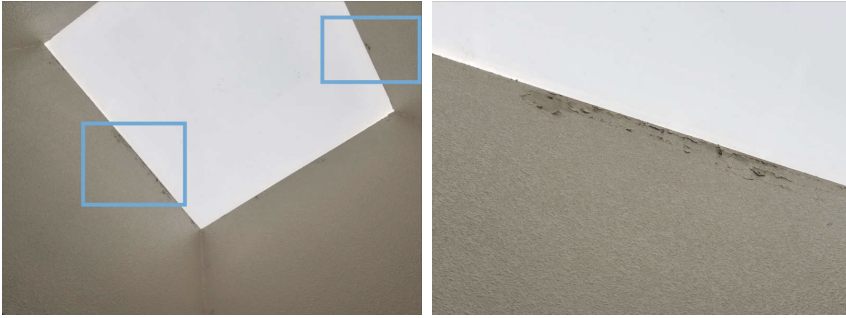
7.12.1 Walls and Ceiling

SKYLIGHT ENCLOSURE PAINT DAMAGED/DETERIORATED

The skylight enclosure paint had some bubbling or deterioration. Recommend evaluation and/or touch up by a qualified professional.

Recommendation

Contact a qualified professional.



8: LAUNDRY

Information

Washer & Dryer: Equipment photos



Washer & Dryer: Dryer power source

220 Electric

Doors: Acceptable

The door is functional.

Walls & Ceiling: Acceptable

The walls and ceiling are in acceptable condition.

Cabinets and Shelves: Acceptable

The shelves are satisfactory

Cabinets and Shelves: Acceptable

The cabinets are functional.

Lights, Wall Switches: Acceptable

The ceiling lights are functional.

Lights, Wall Switches: Acceptable

The wall switches are functional.

Outlets, Electrical Observations: Serviceable

Dryer Vent: Acceptable

The visible dryer vent connection appears correct. NOTE: Faulty dryer vents have been responsible for thousands of fires, hundreds of injuries, and even deaths. The best vents are a smooth-walled metal type that travels a short distance; all other types should be regarded as suspect, and should be inspected bi-annually to ensure that they do not contain trapped lint or moisture.

220 Volt Receptacle: 220 In-Use

The 220 volt receptacle for the dryer is in use. Power supply was not tested at the outlet. I recommend you should evaluate this outlet style to be sure the dryer you plan on using here is compatible with it.

Trap & Drain: Acceptable

The washing machine drain line appears satisfactory but is not visible because it's behind or within the wall.

Valves & Connectors: Acceptable

The washing machine valves and connectors appear functional but were not tested. No leaking was noted. However, because they are not in daily use they typically become stiff or frozen.

Flooring: Acceptable

The floor is in satisfactory condition and has no significant visible defects.

Limitations

Washer & Dryer

NOT STAYING- NOT INSPECTED

We were told the washer and dryer do not convey, and therefore were not inspected.

Observations

8.6.1 Exhaust Fan



Low Priority

NO EXHAUST FAN OR OPENABLE WINDOW

There is not a laundry exhaust fan or openable window installed within this laundry room. Adding one is recommended and typically required to help disperse excessive moisture from the laundry room.



8.7.1 Doors



Medium Priority

THE DOOR RUBS

The laundry door rubs, and needs to be serviced to work smoothly.

Recommendation

Contact a qualified handyman.



9: INTERIORS, WINDOWS & DOORS

Information

Doors: Acceptable

The door(s) are functional.

Walls and Ceiling: Acceptable

The walls and ceiling are textured drywall and in acceptable condition.

Windows: Acceptable

The windows are functional.

Closet: Acceptable

The door(s) are functional.

Closet: Acceptable

The closet was inspected and appeared to be in acceptable condition

Fireplace Notes: Type of fireplace & Photo

Wood Burning

**Lights, Wall Switches: Acceptable**

The wall switches are functional.

Lights, Wall Switches: Acceptable

The ceiling lights are functional.

Outlets, Electrical: Acceptable

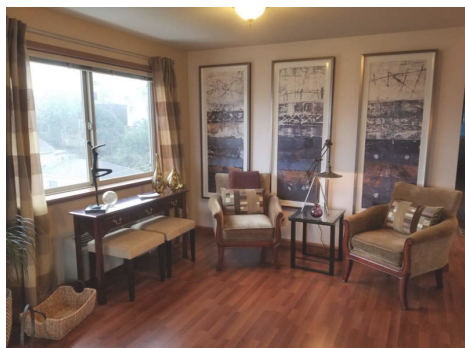
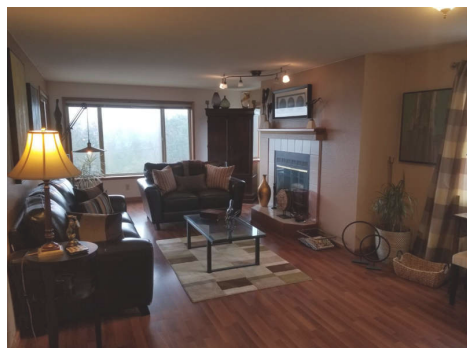
The outlets were functional and grounded. Exceptions will be noted.

Outlets, Electrical: Light switches acceptable

The light switches were functional during the inspection.

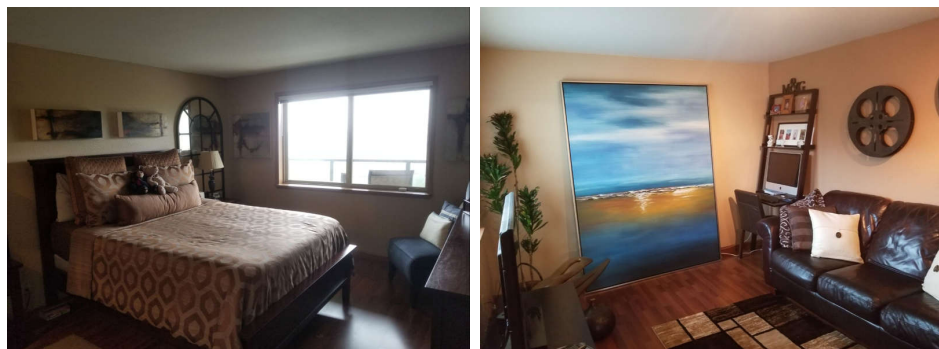
General Notes: Interior Photos

These photos are to show the condition of the interiors at the day of the inspection.



General Notes: Bedrooms Photos

These photos are to show the condition of the bedrooms at the time of the inspection.



General Notes: Interiors in Acceptable condition

Windows, doors, floor and fixtures were overall in acceptable and serviceable condition. This also includes wall, ceilings and other surfaces. Any exceptions will be noted in their perspective areas.

Flooring: Acceptable

The floor is in satisfactory condition and has no significant visible defects.

Fireplace Notes: Wood Burning Fireplace Acceptable

The Wood burning fireplace appeared to be in functional condition. Note that lighting fires is not part of a home inspection.

The National Fire Protection Association has stated that an in-depth Level 2 chimney inspection should be part of every sale or transfer of property with a wood-burning device. Such an inspection may reveal defects that are not apparent to the home inspector. This is our recommendation as well.

Handrails & Guardrails: Acceptable

The handrail or guardrail on the stairs is satisfactory and in good condition.

Floor Treads & Risers: Acceptable

The stair treads and risers appear satisfactory. The rise should not be less than 4 inches, nor greater than 7 inches, and the treads should not be less than 11 inches. In addition, the dimensions of the treads and the risers should not exceed 3/8 of an inch from the smallest dimension on the entire run of the stairs.

GFCI Notes: GFCI Overview

GFCI (ground fault circuit interrupter) protection is a modern safety device designed to help prevent shock hazards. GFCI breakers and receptacle's function is to de-energize a circuit or a portion of a circuit when a hazardous condition exists. GFCI protection is inexpensive and can provide a substantial increased margin of safety.

Present requirement standards include receptacles near sink and wash basins. In Bathrooms, Kitchen, Garages, Exterior, Crawl Spaces and sump pump equipment.

Observations

9.1.1 General Notes

DOOR STOPS-GENERAL

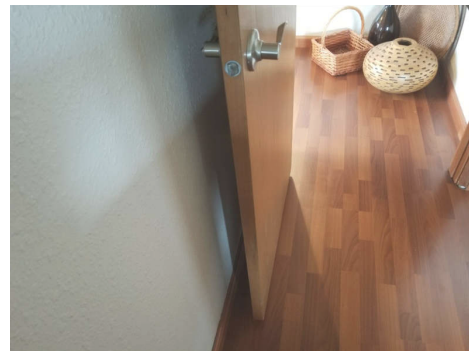
VARIOUS LOCATIONS

One or more door stops throughout the home should be repaired or installed as necessary.



Recommendation

Contact a qualified handyman.



9.2.1 Doors

DOOR RUBS

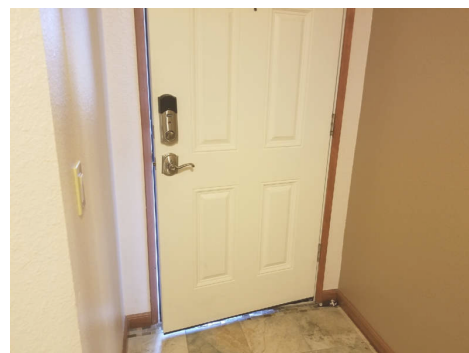
The door rubs and service is recommended.

Recommendation

Contact a qualified handyman.



Medium Priority



9.4.1 Walls and Ceiling

TYPICAL SETTLEMENT CRACKING/NAIL POPS

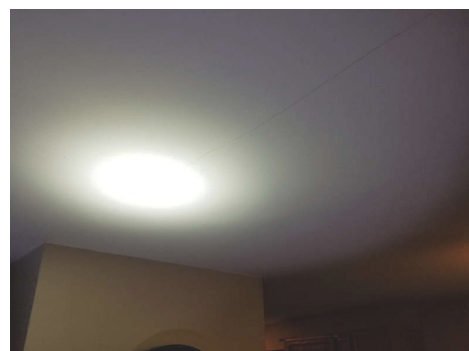
Observed typical settlement type cracking and nail pops on walls and ceilings. Recommend repairs as needed. Home owner to identify all areas for repair.

Recommendation

Recommend monitoring.



Low Priority



9.11.1 Lights, Wall Switches

LIGHT NOT WORKING

RIGHT SIDE BEDROOM & LIVING ROOM

A light fixture did not have light bulbs or the bulbs were burnt out. Recommend replacing bulbs and testing.

Recommendation

Contact a qualified handyman.



Low Priority



10: GENERAL COMMENTS

Information

General Info

This report is the exclusive property of Mountains to Sound Home Inspection, LLC and the client whose name appears herewith, and its use by any unauthorized persons is strictly prohibited.

The observations and opinions expressed in this report are those of Mountains to Sound Home Inspection, LLC and supersede any alleged verbal comments. I inspect all of the systems, components, and conditions described in accordance with the standards of the Washington State Home Inspector Standards of Practice and those that I do not inspect are clearly disclaimed in the contract and/or in the aforementioned standards. However, some components that are inspected and found to be functional may not necessarily appear in the report, simply because we do not wish to waste our client's time by having them read an unnecessarily lengthy report about components that do not need to be serviced.

In accordance with the terms of the contract, the service recommendations that I make in this report should be completed well before the close of escrow by licensed specialists, who may well identify additional defects or recommend some upgrades that could affect your evaluation of the property.

This report has been produced in accordance with our signed contract and is subject to the terms and conditions agreed upon therein. All printed comments and the opinions expressed herein are those of the Inspection Company.

Scope of work

You have contracted with Mountains to Sound Home Inspection, LLC to perform a generalist inspection in accordance with the standards of practice established by the state of Washington and the International Association of Certified Home Inspectors (InterNACHI), a copy of which is available upon request. Generalist inspections are essentially visual, and distinct from those of specialists, inasmuch as they do not include the use of specialized instruments, the dismantling of equipment, or the sampling of air and inert materials. Consequently, a generalist inspection and the subsequent report will not be as comprehensive, nor as technically exhaustive, as that generated by specialists, and it is not intended to be. The purpose of a generalist inspection is to identify significant defects or adverse conditions that would warrant a specialist evaluation. Therefore, you should be aware of the limitations of this type of inspection, which is clearly indicated in the standards. However, the inspection is not intended to document the type of cosmetic deficiencies that would be apparent to the average person, and certainly not intended to identify insignificant deficiencies. Similarly, we do not inspect for vermin infestation, which is the responsibility of a licensed exterminator.

Most homes built after 1978, are generally assumed to be free of asbestos and many other common environmental contaminants. However, as a courtesy to our clients, we are including some well documented, and therefore public, information about several environmental contaminants that could be of concern to you and your family, all of which we do not have the expertise or the authority to evaluate, such as asbestos, radon, methane, formaldehyde, termites and other wood-destroying organisms, pests and rodents, molds, microbes, bacterial organisms, and electromagnetic radiation, to name some of the more commonplace ones. Nevertheless, we will attempt to alert you to any suspicious substances that would warrant evaluation by a specialist. However, health and safety, and environmental hygiene are deeply personal responsibilities, and you should make sure that you are familiar with any contaminant that could affect your home environment. You can learn more about contaminants that can affect your home from a booklet published by The Environmental Protection Agency, which you can read online at www.epa.gov/iaq/pubs/insidest.htm.

MOLD is one such contaminant. It is a microorganism that has tiny seeds, or spores, that are spread in the air then land and feed on organic matter. It has been in existence throughout human history and actually contributes to the life process. It takes many different forms, many of them benign, like mildew. Some characterized as allergens are relatively benign but can provoke allergic reactions among sensitive people, and others characterized as pathogens can have adverse health effects on large segments of the population, such as the very young, the elderly, and people with suppressed immune systems. However, there are less common molds that are called toxins that represent a serious health threat. All molds flourish in the presence of moisture, and we make a concerted effort to look for any evidence of it wherever there could be a water source, including that from condensation. Interestingly, the molds that commonly appear on ceramic tiles in bathrooms do not usually constitute a health threat, but they should be removed. However, some visibly similar molds that form on cellulose materials, such as on drywall, plaster, and wood, are potentially toxigenic. If mold is to be found anywhere within a home, it will likely be in the area of tubs, showers, toilets, sinks, water heaters, evaporator coils, inside attics with unvented bathroom exhaust fans, and return-air compartments that draw outside air, all

of which are areas that we inspect very conscientiously. Nevertheless, mold can appear as though spontaneously at any time, so you should be prepared to monitor your home, and particularly those areas that we identified. Naturally, it is equally important to maintain clean air-supply ducts and to change filters as soon as they become soiled because contaminated ducts are a common breeding ground for dust mites, rust, and other contaminants. Regardless, although some mold-like substances may be visually identified, the specific identification of molds can only be determined by specialists and laboratory analysis and is absolutely beyond the scope of our inspection. Nonetheless, as a prudent investment in environmental hygiene, we categorically recommend that you have your home tested for the presence of any such contaminants, and particularly if you or any member of your family suffers from allergies or asthma. Also, you can learn more about mold from an Environmental Protection Agency document entitled "A Brief Guide to Mold, Moisture, and Your Home," by visiting their website at: <http://www.epa.gov/iaq/molds/moldguide.html/>, from which it can be downloaded.

ASBESTOS is a notorious contaminant that could be present in any home built before 1978. It is a naturally occurring mineral fiber that was first used by the Greek and Romans in the first century, and it has been widely used throughout the modern world in a variety of thermal insulators, including those in the form of paper wraps, bats, blocks, and blankets. However, it can also be found in a wide variety of other products too numerous to mention, including duct insulation and acoustical materials, plasters, siding, floor tiles, heat vents, and roofing products. Although perhaps recognized as being present in some documented forms, asbestos can only be specifically identified by laboratory analysis. The most common asbestos fiber that exists in residential products is chrysotile, which belongs to the serpentine or white-asbestos group, and was used in the clutches and brake shoes of automobiles for many years. However, a single asbestos fiber is said to be able to cause cancer and is, therefore, a potential health threat and a litigious issue. Significantly, asbestos fibers are only dangerous when they are released into the air and inhaled, and for this reason authorities such as the Environmental Protection Agency [EPA] and the Consumer Product Safety Commission [CPSC] distinguish between asbestos that is in good condition, or non-friable, and that which is in poor condition, or friable, which means that its fibers could be easily crumbled and become airborne. However, we are not specialists and, regardless of the condition of any real or suspected asbestos-containing material [ACM], we would not endorse it and recommend having it evaluated by a specialist.

POPCORN CEILING- In early formulations, it often contained white asbestos fibers. When asbestos was banned in ceiling treatments by the Clean Air Act of 1978 in the United States,[1] popcorn ceilings fell out of favor in much of the country. However, in order to minimize economic hardship to suppliers and installers, existing inventories of asbestos-bearing texturing materials were exempt from the ban, so it is possible to find asbestos in popcorn ceilings that were applied through the 1980s. According to the EPA, the use of asbestos in textured ceiling paint was banned in 1977. Inhaled in large quantities, asbestos fibers can cause lung disease, scarring of the lungs and lung cancer. However, not all popcorn ceilings contain asbestos. Moreover, if left undisturbed or contained, asbestos is not dangerous.

RADON is a gas that results from the natural decay of radioactive materials in the soil and is purported to be the second leading cause of lung cancer in the United States. The gas is able to enter homes through the voids around pipes in concrete floors or through the floorboards of poorly ventilated crawlspaces, and particularly when the ground is wet and the gas cannot easily escape through the soil and be dispersed into the atmosphere. However, it cannot be detected by the senses, and its existence can only be determined by sophisticated instruments and laboratory analysis, which is completely beyond the scope of our service. However, you can learn more about radon and other environmental contaminants and their effects on health, by contacting the Environmental Protection Agency (EPA), at www.epa.gov/radon/images/hmbuygud.pdf, and it would be prudent for you to inquire about any high radon readings that might be prevalent in the general area surrounding your home.

LEAD poses an equally serious health threat. In the 1920's, it was commonly found in many plumbing systems. In fact, the word "plumbing" is derived from the Latin word "plumbum," which means lead. When in use as a component of a waste system, it is not an immediate health threat, but as a component of potable water pipes, it is a definite health hazard. Although rarely found in modern use, the lead could be present in any home build as recently as the nineteen forties. For instance, lead was an active ingredient in many household paints, which can be released in the process of sanding, and even be ingested by small children and animals chewing on painted surfaces. Fortunately, the lead in painted surfaces can be detected by industrial hygienists using sophisticated instruments, but testing for it is not cheap. There are other environmental contaminants, some of which we have already mentioned, and others that may be relatively benign. However, we are not environmental hygienists, and as we stated earlier we disclaim any responsibility for testing or establishing the presence of any environmental contaminant, and recommend that you schedule whatever specialist inspections that may deem prudent within the contingency period.

CRACKS AND WINDOWS Unsealed cracks around windows, doors, and thresholds can permit moisture intrusion, which is the principal cause of the deterioration of any surface. Unfortunately, the evidence of such intrusion may only be obvious when it is raining. We have discovered leaking windows while it was raining that may not

have been apparent otherwise. Regardless, there are many styles of windows but only two basic types, single and dual-glazed. Dual-glazed windows are superior because they provide a thermal as well as an acoustical barrier. However, the hermetic seals on these windows can fail at any time, and cause condensation to form between the panes. Many environmental factors come into play when and if hermetic seals have failed and Unfortunately, it is not always apparent, which is why we disclaim an evaluation of hermetic seals or unnoticed fogging glass. Nevertheless, in accordance with industry standards, we test a representative number of unobstructed windows and ensure that at least one window in every bedroom is operable and facilitates an emergency exit.

FURTHERMORE, you are advised to seek two professional opinions and acquire estimates of repair as to any defects, comments, improvements or recommendations mentioned in this report. We recommend that the professional making any repairs inspect the property further in order to discover and repair related problems that were not identified in the report. We recommend that all repairs, corrections, and cost estimates be completed and documented prior to closing or purchasing the property. Feel free to hire other professionals to inspect the property prior to closing. Including HVAC professionals, electricians, engineers, window professionals roofers etc.

All conditions are reported as they existed at the time of the inspection. The information contained in this report may be unreliable beyond the date of the inspection due to changing conditions.

11: ELECTRIC HEATING SYSTEM

Information

Electric Heating Notes: Equipment Photo



Electric Heating Notes: Resistance Heaters

The resistance heaters were functional.

Thermostats: Acceptable

The thermostats were functional at the time of the inspection

Observations

11.1.1 Electric Heating Notes NOISY HEATING UNIT MASTER BEDROOM

Medium Priority

The heating unit was noisy. Recommend servicing for replacing as needed.

Recommendation
Contact a qualified professional.



12: REASONABLE EXPECTATIONS OF A HOME INSPECTION

Information

Setting Reasonable Expectations

Setting Reasonable Expectations When Things Go Wrong.

There may come a time that you discover something wrong with the house, and you may be upset or disappointed with your home inspection.

Intermittent Or Concealed Problems

Some problems can only be discovered by living in a house. They cannot be discovered during the few hours of a home inspection. For example, some shower stalls leak when people are in the shower, but do not leak when you simply turn on the tap. Some roofs and basements only leak when specific conditions exist. Some problems will only be discovered when carpets were lifted, furniture is moved or finishes are removed.

No Clues

These problems may have existed at the time of the inspection but there were no clues as to their existence. Our inspections are based on the past performance of the house. If there are no clues of a past problem, it is unfair to assume we should foresee a future problem.

We Always Miss Some Minor Things

Some say we are inconsistent because our reports identify some minor problems but not others. The minor problems that are identified were discovered while looking for more significant problems. We note them simply as a courtesy. The intent of the inspection is not to find the \$200 problems; it is to find the \$2,000 problems. These are the things that affect peoples decisions to purchase.

Contractors Advice

The main source of dissatisfaction with home inspectors comes from comments made by contractors. Contractors opinions often differ from ours. Dont be surprised when three roofers all say the roof needs replacement when we said that, with some minor repairs, the roof will last a few more years.

Last Man In Theory

While our advice represents the most prudent thing to do, many contractors are reluctant to undertake these repairs. This is because of the Last Man In Theory. The contractor fears that if he is the last person to work on the roof, he will get blamed if the roof leaks, regardless of whether the roof leak is his fault or not. Consequently, he wont want to do a minor repair with high liability when he could re-roof the entire house for more money and reduce the likelihood of a callback. This is understandable.

Most Recent Advice Is Best

There is more to the Last Man In Theory. It suggests that it is human nature for homeowners to believe the last bit of expert advice they receive, even if it is contrary to previous advice. As home inspectors, we unfortunately find ourselves in the position of First Man In and consequently it is our advice that is often disbelieved.

Why Didnt We See It

Contractors may say I cant believe you had this house inspected, and they didnt find this problem. There are several reasons for these apparent oversights:

1. Conditions During Inspection

It is difficult for homeowners to remember the circumstances in the house, at the time of the inspection. Homeowners seldom remember that it was snowing, there was storage everywhere in the basement or that the

furnace could not be turned on because the air conditioning was operating, et cetera. Its impossible for contractors to know what the circumstances were when the inspection was performed.

2. The Wisdom Of Hindsight

When the problem manifests itself, it is very easy to have 20/20 hindsight. Anybody can say that the basement is wet when there is 2 inches of water on the floor. Predicting the problem is a different story.

3. A Long Look

If we spent 1/2 an hour under the kitchen sink or 45 minutes disassembling the furnace, wed find more problems too. Unfortunately, the inspection would take several days and would cost considerably more.

4. Were Generalists

We are generalists; we are not specialists. The heating contractor may indeed have more heating expertise than we do.

5. An Invasive Look

Problems often become apparent when carpets or plaster are removed, when fixtures or cabinets are pulled out, and so on. A home inspection is a visual examination. We dont perform any invasive or destructive tests.

Not Insurance

In conclusion, a home inspection is designed to better your odds. It is not designed to eliminate all risk. For that reason, a home inspection should not be considered an insurance policy. The premium that an insurance company would have to charge for a policy with no deductible, no limit and an indefinite policy period would be considerably more than the fee we charge. It would also not include the value added by the inspection.

We hope this is food for thought.

13: REPORT CONCLUSION

Information

Conclusion

Congratulations on the purchase of your new home. Since we never know who will be occupying or visiting a property, whether it be children or the elderly, we ask you to consider following these general safety recommendations: install and monitor smoke and carbon monoxide detectors; identify all escape and rescue ports; rehearse an emergency evacuation of the home; upgrade older electrical systems (if present) by at least adding ground-fault outlets; never service any electrical equipment without first disconnecting its power source; safety-film all non-tempered glass; ensure that every elevated window and the railings of stairs, landings, balconies, and decks are child-safe, meaning that barriers are in place or that the distance between the rails is not wider than three inches; regulate the temperature of water heaters to prevent scalding; make sure that goods that contain caustic or poisonous compounds, such as bleach, drain cleaners, and nail polish removers be stored where small children cannot reach them; ensure that all garage doors are well balanced and have a safety device, particularly if they are the heavy wooden type; remove any double-cylinder deadbolts from exterior doors; and consider installing child-safe locks and alarms on the exterior doors of all pool and spa properties.

We are proud of our service and trust that you will be completely satisfied with the quality of our report. We have made every effort to provide you with an accurate assessment of the condition of the property and its components and to alert you to any significant defects or adverse conditions. However, we may not have tested every outlet, and opened every window and door, or identified every minor defect. Also because we are not specialists or because our inspection is essentially visual, latent defects could exist. Therefore, you should not regard our inspection as conferring a guarantee or warranty. It does not. It is simply a report on the general condition of a particular property at a given point in time. Furthermore, as a homeowner, you should expect problems to occur. Roofs will leak, drain lines will become blocked, and components and systems will fail without warning. For these reasons, you should take into consideration the age of the house and its components and keep a comprehensive insurance policy current. If you have been provided with a home protection policy, read it carefully. Such policies usually only cover insignificant costs, such as that of roofer service, and the representatives of some insurance companies can be expected to deny coverage on the grounds that a given condition was preexisting or not covered because of what they claim to be a code violation or manufacturers defect. Therefore, you should read such policies very carefully, and depend upon our company for any consultation that you may need.

FURTHERMORE, you are advised to seek two professional opinions and acquire estimates of repair as to any defects, comments, improvements or recommendations mentioned in this report. We recommend that the professional making any repairs inspect the property further in order to discover and repair related problems that were not identified in the report. We recommend that all repairs, corrections, and cost estimates be completed and documented prior to closing or purchasing the property. Feel free to hire other professionals to inspect the property prior to closing. Including HVAC professionals, electricians, engineers, window professionals roofers etc.

Thank you for taking the time to read this report, and call us if you have any questions or observations whatsoever. I am always attempting to improve the quality of my service and this report, and I will continue to adhere to the highest standards of the real estate industry and to treat everyone with kindness, courtesy, and respect.

STANDARDS OF PRACTICE

Main Electrical Panel

Our examination of the electrical system includes a visual examination of the exposed and accessible branch circuits, wiring, service panel, over current protection devices, lighting fixtures, switches, and receptacles. Service equipment, proper grounding, wiring methods and bonding are focal points. We inspect for adverse conditions such as improper installation of aluminum wiring, lack of grounding and bonding, over-fusing, exposed wiring, open-air wire splices, reverse polarity and defective GFCI's. The hidden nature of the electrical wiring prevents inspection of every length of wire or their connections. Telephone, video, cable, audio, security systems and other low voltage systems were not included in this inspection unless specifically noted. We recommend you have the seller or a specialist demonstrate the serviceability or locations of these systems to you if necessary.

Any electrical repairs attempted by anyone other than a licensed electrician should be approached with caution. The power to the entire house should be turned off prior to beginning any repair efforts, no matter how trivial the repair may seem. Aluminum wiring requires periodic inspection and maintenance by a licensed electrician. Operation of time clock motors is not verified. Inoperative light fixtures often lack bulbs or have dead bulbs installed. Light bulbs are not changed during the inspection, due to time constraints. Smoke Alarms should be installed within 15 feet of all Bedroom doors and in Bedrooms. These units should be tested monthly.

Water Heater & Plumbing

Our inspection of the water heater includes a visual examination of the accessible portions of the tank, gas, electrical and/or water connections, venting and safety valves. These items are examined for proper function, excessive or unusual wear, leakage and general state of repair.

Our Inspection of the plumbing system includes a visual examination of the exposed portions of the domestic water supply, drain waste, vent, gas lines, faucets, fixtures, valves, drains, traps, exposed pipes and fittings. These items are examined for proper function, excessive or unusual wear, leakage and general state of repair. The hidden nature of piping prevents inspection of every pipe and joint connection, especially in walls, floors and ceiling voids. A sewer lateral test is necessary to determine the condition of the underground sewer lines is beyond the scope of this inspection.

Our review of the plumbing system does not include landscape irrigation systems, water wells, on site and/or private water supply systems, off site community water supply systems, or private (septic) waste disposal systems unless specifically noted. Review of these systems could be performed by qualified specialists prior to closing of escrow.

Kitchen

Inspection of the stand alone refrigerators, freezers and built-in ice makers are outside the scope of the inspection. No opinion is offered as to the adequacy of dishwasher operation. Ovens, self or continuous cleaning operations, cooking functions, clocks, timing devices, lights and thermostat accuracy are not tested during this inspection. Appliances are not moved during the inspection to inspect below or behind them. Portable dishwashers are not inspected, as they require connection to facilitate testing and are sometimes not left with the home.

Bathrooms

Our inspection of the bathrooms included a visual examination of the readily accessible portions of the floors, walls, ceilings, cabinets, countertops and plumbing fixtures. Bathrooms are inspected for water drainage, damage, deterioration to floor and walls, proper function of components, active leakage, unusual wear and general state of repair. Bathroom fixtures are run simultaneously to check for adequate water flow and pressure. Fixtures are tested using normal operating controls. Vent fans and their duct work are tested for their proper operation and examined where visible.

Shower pans are visually checked for leakage, but leaks often do not show except when the shower is in actual use. Determining whether shower pans, tub/shower surrounds are water tight is beyond the scope of this inspection. It is very important to maintain all grouting and caulking in the bath areas. Very minor imperfections can allow water to get into the wall or floor areas and cause damage. Proper ongoing maintenance will be required in the future.

Interiors, Windows & Doors

Our inspection of the Interior includes a visual inspection of the readily accessible portions of the walls, ceilings, floors, doors, cabinetry, countertops, steps, stairways, balconies and railings. Please note that a representative sample of the accessible windows and electrical receptacles are inspected. These features are examined for proper function, excessive wear and general state of repair. In some cases, all or portions of these components may not be visible because of furnishings and personal items. In these cases some of the items may not be inspected.

The condition of walls behind wall coverings, paneling and furnishings cannot be judged. Only the general condition of visible portions of floors is included in this inspection. As a general rule, cosmetic deficiencies are considered normal wear and tear and are not reported. Determining the source of odors or like conditions is not a part of this inspection. Floor covering damage or stains may be hidden by furniture. The condition of floors underlying floor coverings is not inspected. Determining the condition of insulated glass windows is not always possible due to temperature, weather and lighting conditions. Check with owners for further information. All fireplaces should be cleaned and inspected on a regular basis to make sure that no cracks have developed. Large fires in the firebox can overheat the firebox and flue liners, sometimes resulting in internal damage.

Electric Heating System

Our examination of the heating system includes a visual examination of the exposed and accessible heating equipment, thermostat, safety controls, venting and the means of air distribution. Our inspection of the heating system includes activating the heating system via the thermostat and a visual examination of the accessible components listed below.

These items are examined for proper function, excessive or unusual wear and general state of repair. Heat exchangers are inaccessible by design, and are not part of the Washington standards of practice. They must be completely removed from the furnace to be fully evaluated. Our inspection does not include disassembly of the furnace. The inspector cannot light pilot lights due to the liability. Safety devices are not tested by the inspector. To obtain maximum efficiency and reliability from your heating system, we recommend annual servicing and inspections by a qualified heating specialist.

Determining the condition of oil tanks, whether exposed or buried, is beyond the scope of this inspection. Leaking oil tanks represent an environmental hazard which is sometimes a costly condition to address.